

STRAINER

1 CHARACTERISTICS AND BENEFITS

- Flanged armature for cleaning neutral gaseous and liquid media
- Strainers protect valves, improve the system's reliability and lower the costs of maintenance
- Simple, reliable construction and low weight
- High mesh width light – low chance of clogging
- Simple dismantling of the screen for cleaning
- Cleaning cover plug ½"
- Small loss of pressure due to optimum hydraulic form
- Max. flow speed for liquids 4 m/s at PN16, 5m/s at PN25, for gases 35 m/s
- Constructions with a normal screen and a fine screen widen the range of application
- Simple handling and maintenance
- External coloured in RAL 7045 for cast iron and RAL 3009 for ductile iron

ART. 020

DN 15–300
 PN 10/16 – cast iron
 PN 16/25 – ductile iron



2 STANDARDS

- Manufactured acc. to the EU Pressure Equipment Directive PED 2014/68/EU
- Body and cover material acc. to EN 1561 for EN GJL-250 and EN 1563 for EN GJS-400-18
- Strength calculated acc. to EN 12516-3 and EN 12516-4
- Flanges acc. to EN 1092-2 PN 10/16/25
- Installation length acc. to EN 558-1, series 1 (DIN 3202, F1)
- EN 19 Specification
- Final strength and tightness test acc. to EN 12266-1

ON DEMAND

POSSIBLE ADDITIONS

- Without cover plug
- PN 6 / ANSI 150 flanges
- Screen other density
- Magnet inserts
- Ball valve taps
- Screws A2
- Manometer connections
- Epoxy wet coating RAL 5005

SPARE PARTS

- Gaskets
- Screens
- Cover

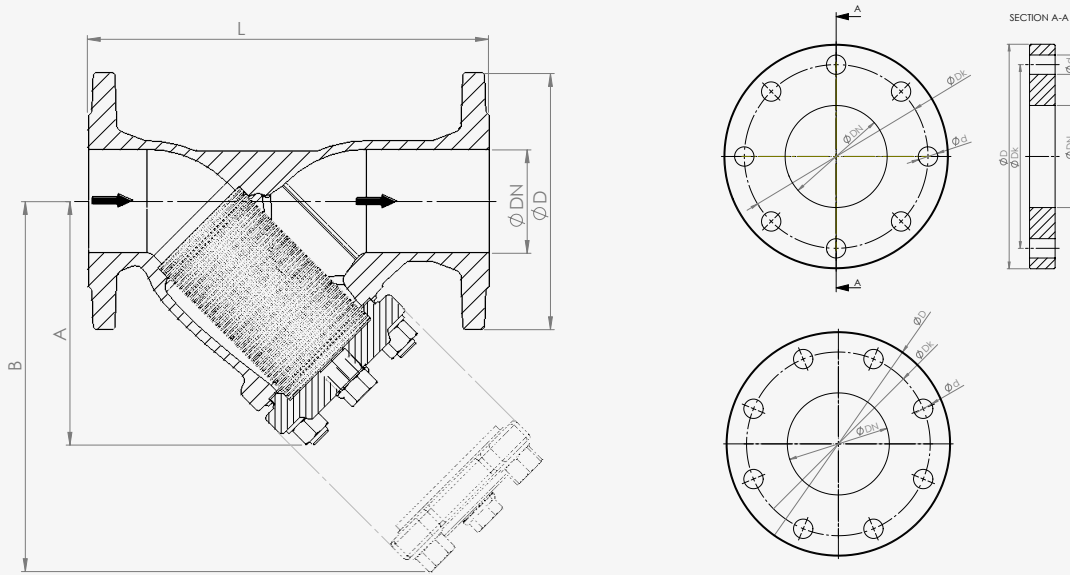
3 APPROVALS

- CE mark
- EAC for the Russian market
- Compliance with requirements of the Ukrainian and Lithuanian market

PN	10	16	16	25
Casting material	EN- GJL-250		EN- GJS-400-18	
Max. operating pressure [bar]	10	16	16	25
Temperature resistance of colour coating [°C]	90		150	
Max. operating temperature* for neutral liquids [°C]	300		350	
Shell strength and tightness: test with air DN15-200, test with water DN250-300; rate A [bar]	15	24	24	37,5

*Maximum operating temperature depends of the mounted materials and pressure.

TECHNICAL DRAWINGS



DATA

DN	15	20	25	32	40	50	65	80	100	125	150	200	250	300	
L [mm]	130	150	160	180	200	230	290	310	350	400	480	600	730	850	
A [mm]	75	75	90	90	110	140	160	190	240	275	310	440	470	560	
B [mm]	115	115	135	135	170	210	240	320	360	425	485	660	680	820	
Dk PN16 [mm]	65	73	85	100	110	125	145	160	180	210	240	295	355	410	
Dk PN25 [mm]	65	75	85	100	110	125	145	160	190	220	250	310	370	430	
d PN16 [mm]		14					19				23		28		
d PN25 [mm]		14				19		23		28			31		
Normal screen	Mesh light [MW]	0,54		0,87				1,18							
	Qty loops/cm ²	150	150	64	64	64	64	64	25	25	25	25	25	25	
	Kv [m ³ /h]	5,3	9,5	16,5	20	33	54	95	140	201	340	526	870	1260	1735
	ζ [-]	2,88	2,84	2,3	4,19	3,76	3,43	3,16	3,34	3,96	3,38	2,93	3,38	3,94	4,31
Fine screen	Mesh light [MW]	0,25													
	Qty loops/cm ²	625	625	625	625	625	625	625	625	625	625	625	625	625	625
	Kv [m ³ /h]	5	9	14,8	18	30	48	85	131	189	320	494	818	1184	1631
	ζ [-]	3,24	3,16	2,85	5,18	4,55	4,34	3,95	3,82	4,48	3,81	3,32	3,83	4,46	4,87
Weight [kg]*	2,2	3,3	3,8	5	6,8	7,5	11,2	15,4	23,2	33,5	47,1	99,5	162	280	

* Weight only for cast iron strainers PN 16.

MATERIALS

	BASIC VERSION		SPECIAL VERSIONS ON DEMAND (differences from basic version)
	CAST IRON	DUCTILE IRON	
Body	EN GJL-250	EN GJS-400-18	
Cover	EN GJL-250	EN GJS-400-18	
Cover gasket	Graphilit	Graphilit	BA-U/viton
Cover screws	Galv. A2F YK/A2F 5.6	Galv A2F. YK/A2F 5.6	A2
Cover plug 1/2"	Galv. A2F YK/A2F 5.6	Galv. A2F YK/A2F 5.6	A2
Screen	W. Nr. 1.4301 expanded	1.4301 expanded	1.4401
Screen carrier**	W. Nr. 1.4301 expanded	1.4301 expanded	1.4401/perforated
Colour coating	RAL7045 min. 40 µm	RAL3009 min. 40 µm	RAL9006 (up to 300°C)/RAL5005 epoxy wet (up to 150°C)

** Basic at dimension DN150 and higher and at special screen densities.